

SELF CHECK-IN

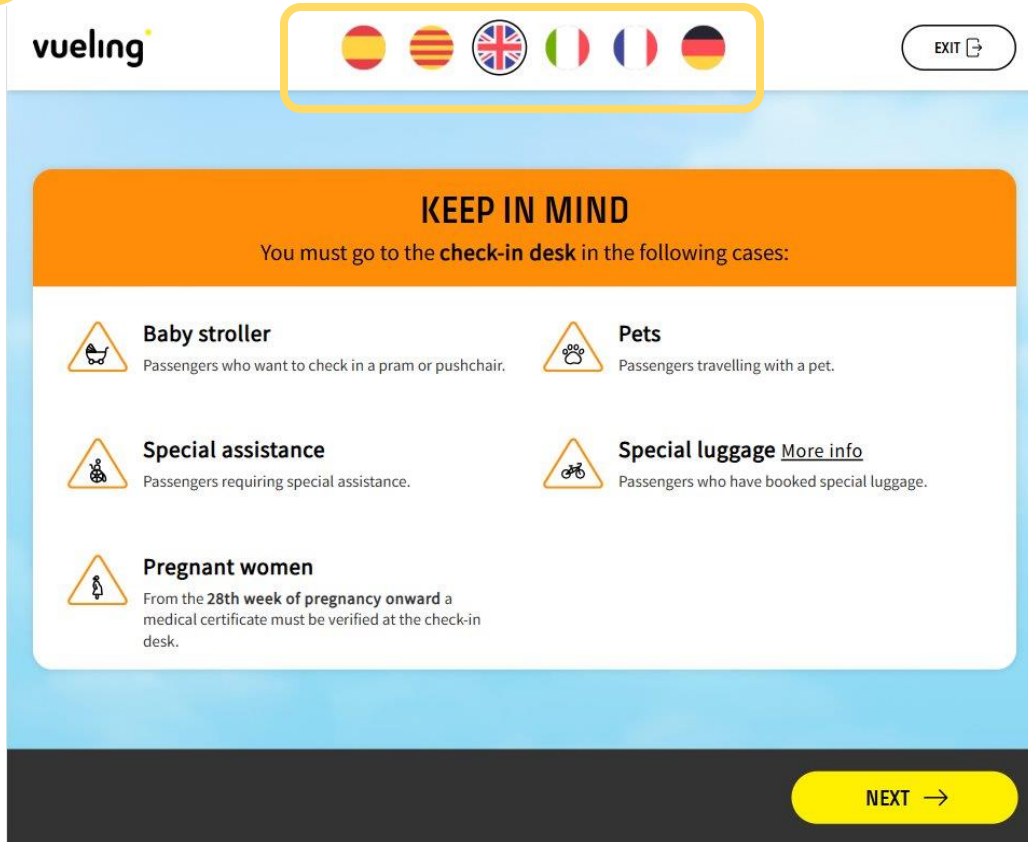
AREA

Groups

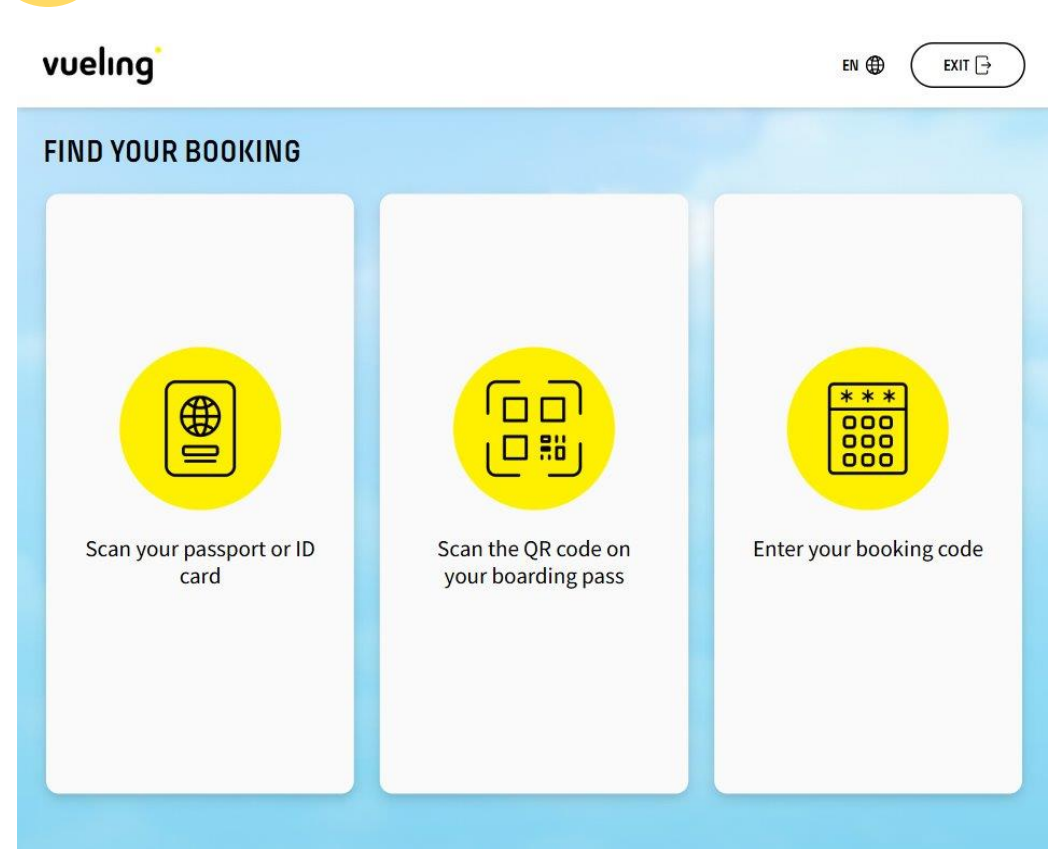
Julio 2026

vueling[®]

1 Language:



2 3 different Options to retrieve the booking:

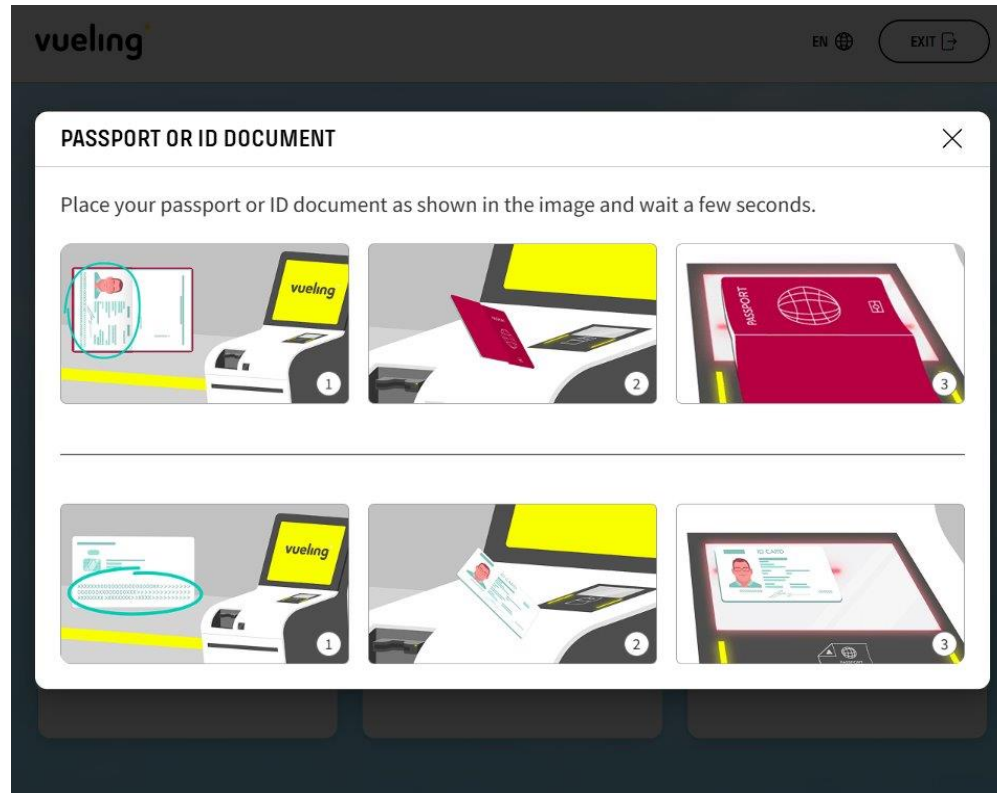


Service not available for:

- Passengers with a baby stroller.
- Pregnant women from the 28th week of gestation.
- Passengers with special assistance needs (wheelchairs, disabilities...).
- Special baggage.
- Passengers with unvalidated residency status.
- Passengers with pets

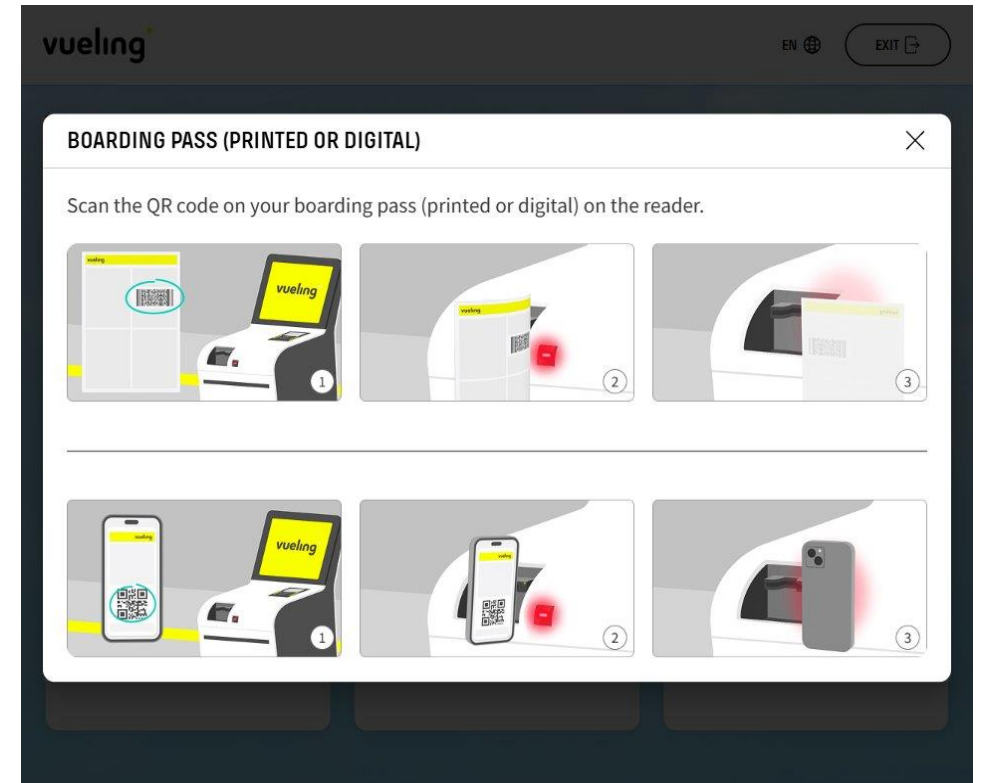
WAYS TO ACCESS THE RESERVATION FOR SELF-CHECK-IN

1st Option Scan your passport or ID card:



Name and surname on the document must match with the booking in order to retrieve it.

2a Option Scan the QR code on your BP:



Previous Online check-in necessary though Vueling Groups.

WAYS TO ACCESS THE RESERVATION FOR SELF-CHECK-IN

3rd Option Introduce your booking code

vueling EN EXIT

ENTER SURNAME AND BOOKING CODE

Your surname Your booking code (e.g. XG6LM3)

You only need to enter the first three letters [Where can I find it?](#)

1 2 3 4 5 6 7 8 9 0 [X]

Q W E R T Y U I O P

A S D F G H J K L ' ' [X]

Z X C V B N M . -

← NEXT →

vueling EN EXIT

WE NEED MORE INFORMATION TO FIND YOUR BOOKING

Help us with these details.

Name Surname DD/MM/YYYY

Must match what's indicated in your booking Must match what's indicated in your booking Your date of birth

1 2 3 4 5 6 7 8 9 0 [X]

Q W E R T Y U I O P

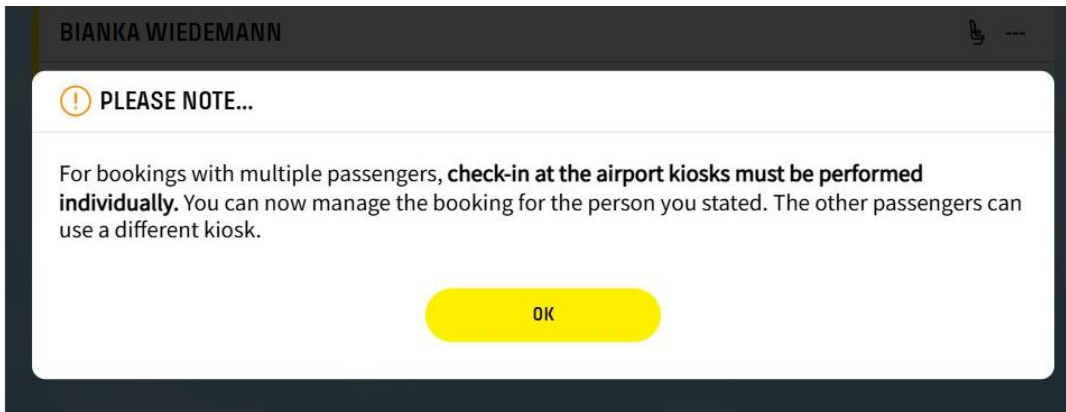
A S D F G H J K L ' ' [X]

Z X C V B N M . -

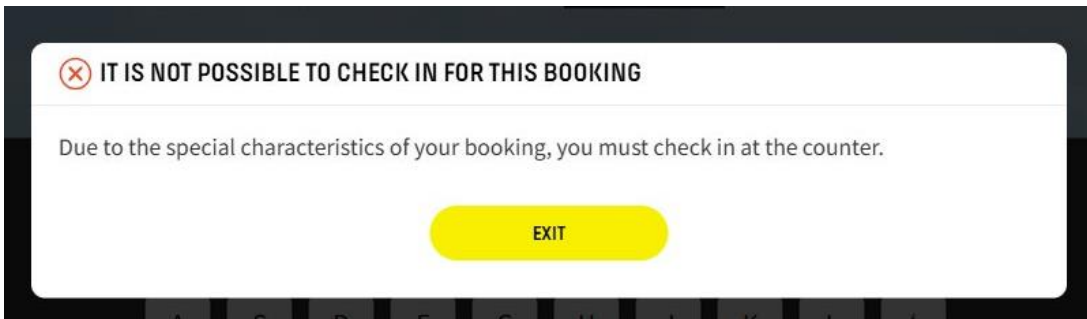
← NEXT →

To access the booking with this option, the **Date Of Birth** needs to be informed beforehand in the booking, otherwise it won't be found.

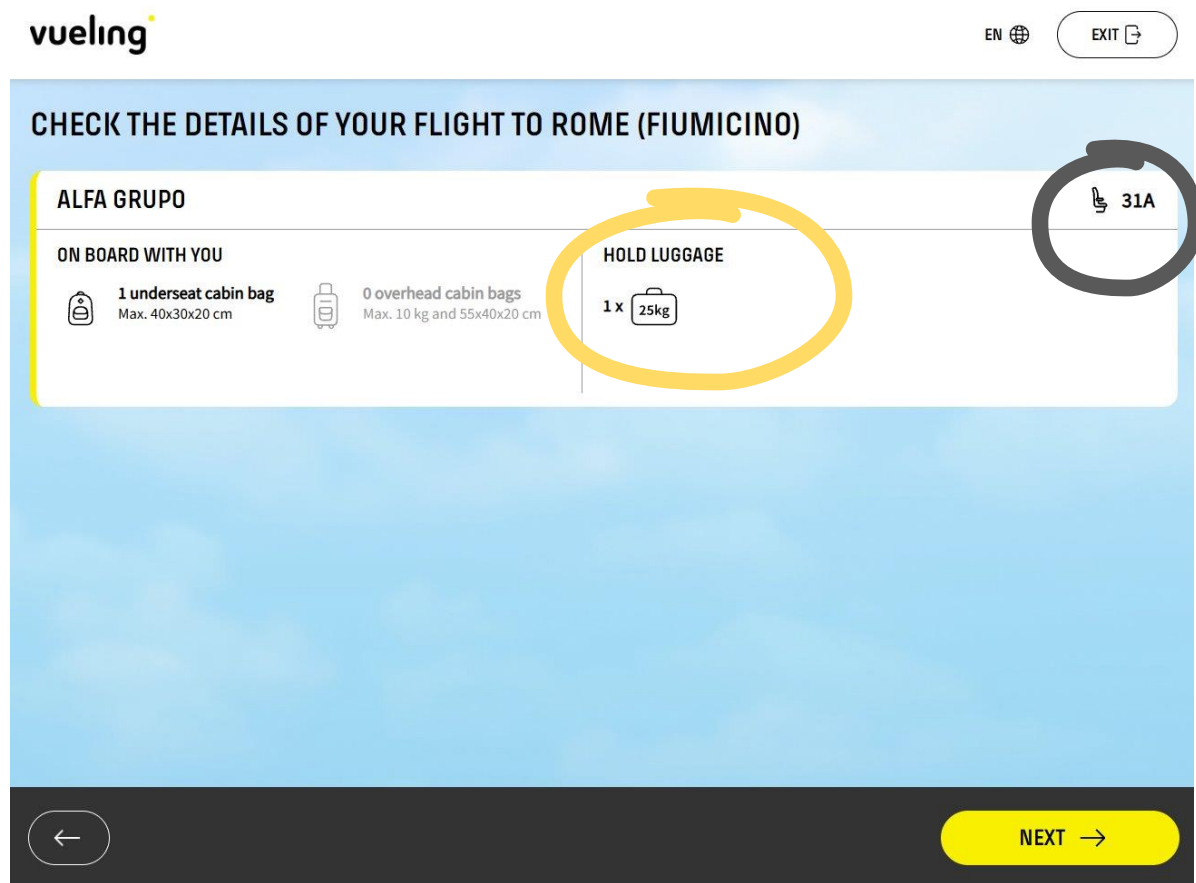
3 Check-in at the kiosks must be performed individually:



Some special requests (such as wheelchair assistance or special baggage) require check-in to be done at the counter. If the reservation includes one of these requests, the corresponding passenger will not be able to check in at the self-check-in area.



4 Detailed information about your baggage and seat will be shown during the process.

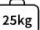



5

Print the labels for the bag(s) and leave them at the drop off area:

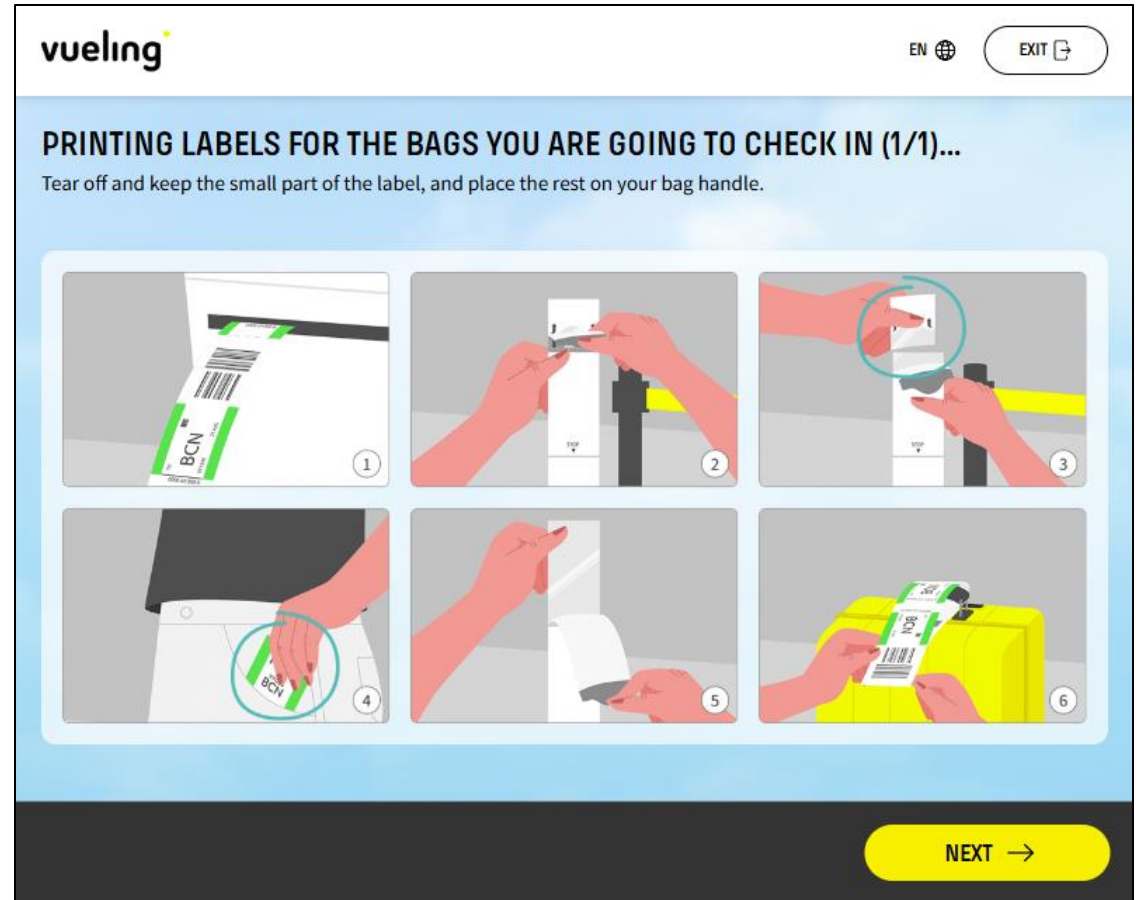
WHAT LUGGAGE DO YOU WANT TO CHECK IN ON YOUR FLIGHT TO ROME (FIUMICINO)?
Select the one you are going to check in.

BETA GRUPO

1 x  25kg

 **NEXT** 

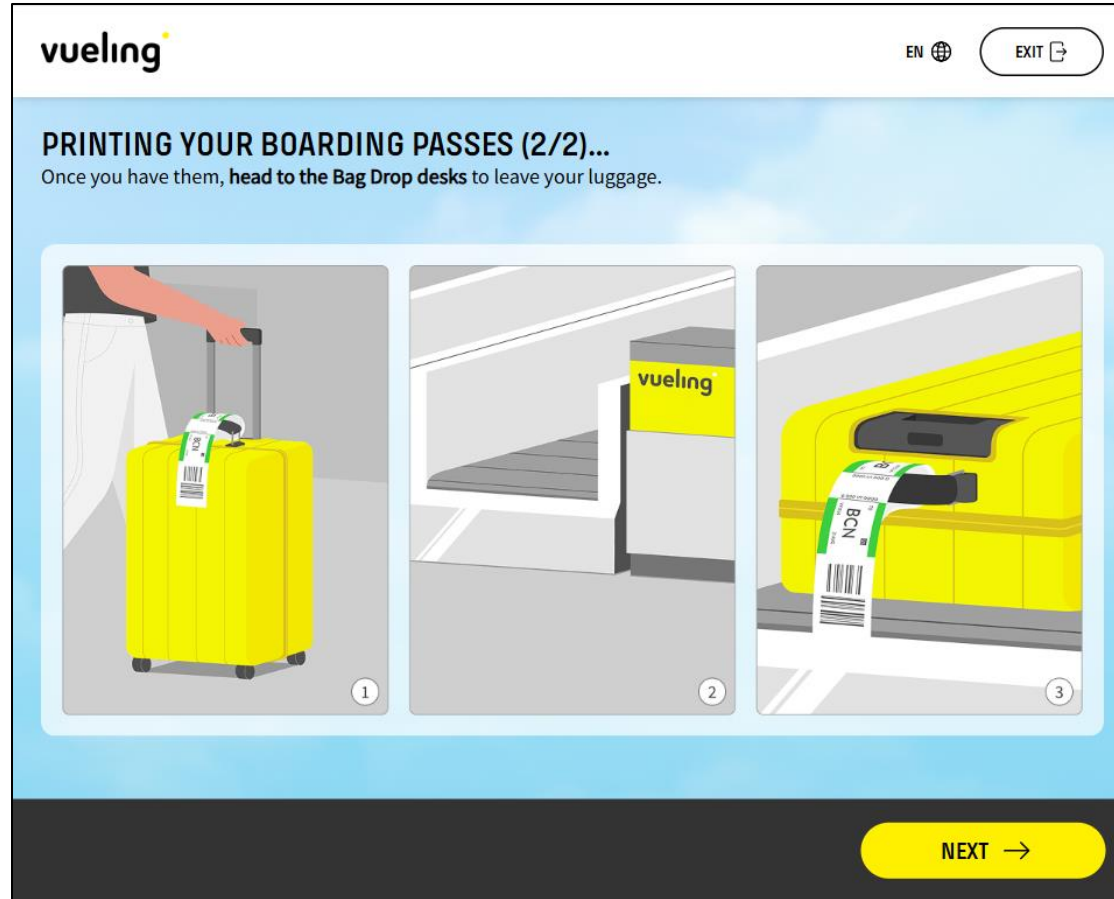
1 Choose the baggage you want to check in.



2 Pick up the tag printed by the self-check-in machine and attach it to your bag.

5

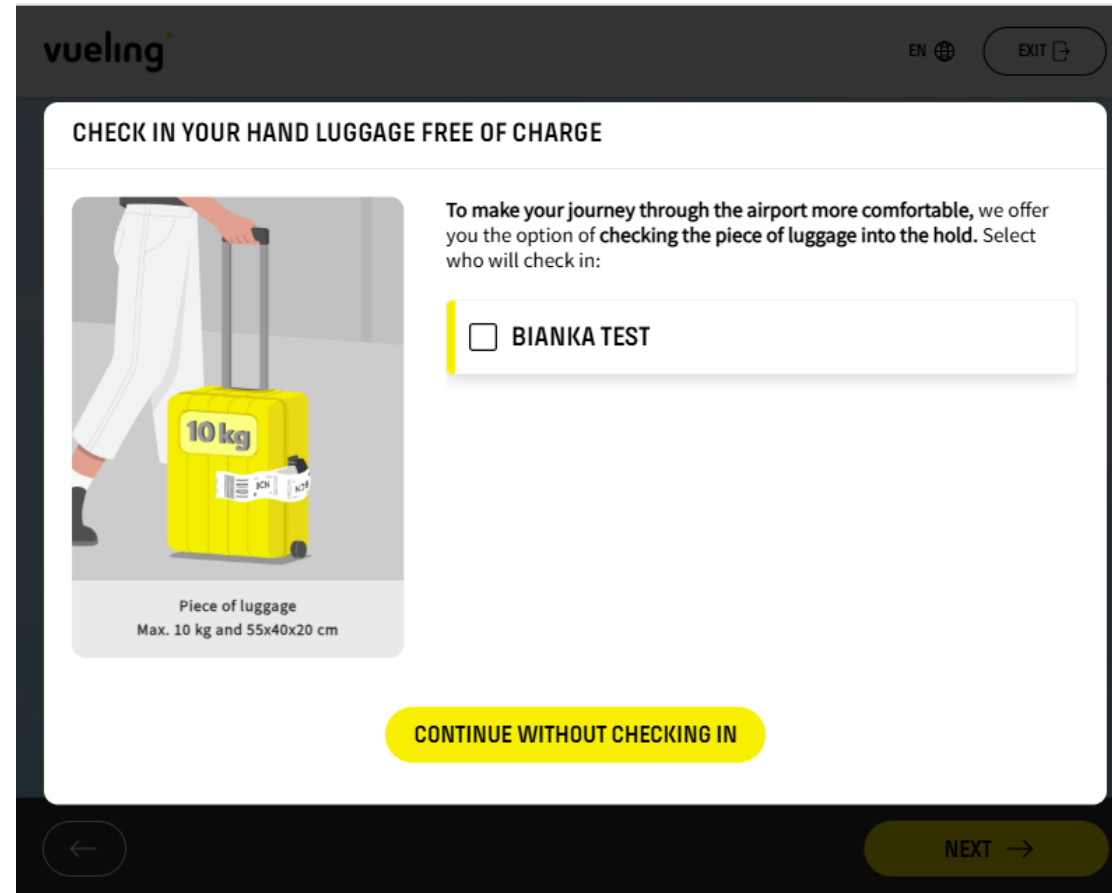
Printing the labels for the bag(s) and placing them on drop area:



3

Head to the Bag Drop desks to leave your luggage.

6 If you have hand luggage included in your booking, you can check it in for free at the kiosk if you wish:



THANK YOU!

vueling